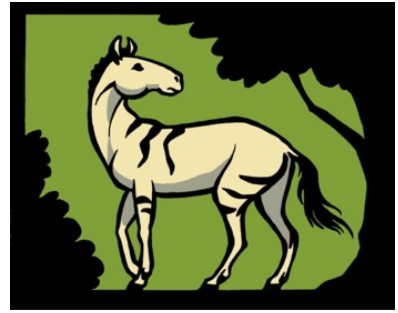


## NOW Community Meeting (online)

Call to all NOW community, friends and anyone interested – join us to discuss the ongoing matters of the NOW database of fossil mammals. The goal is to gather ideas, suggestions, complaints and/or promises for NOW development and to hear from the NOW Community.



### On Thursday February 9, 2023

**14:00-15:30 GMT** (6:00-7:30 California, 9:00-10:30 New York, 15:00-16:30 Spain, 16:00-17:30 Finland, 17:00-18:30 Kenya, 22:00-23:30 Beijing)

Please pre-register and indicate the topics of primary interest via this link:  
<https://forms.gle/msi1ShXt7vBxjfn89>

### Tentative programme

14:00-14:10 Welcome and introduction by Indrė Žliobaitė and Lars van den Hoek Ostende

14:10-14:35 Discussion groups (join one of the four):

**G1: Chronology/ stratigraphy/ treatment of time in NOW (mod. Isaac Casanovas Vilar)**

This group will discuss ideas and questions in relation to treatment of age information. The group may revisit questions of faunal units, age boundaries, fractions of age and correlations. The possibility of a hierarchical treatment of age information will also be discussed as well as treatment of archaeological time information. Any open questions about age/time.

**G2: Integration of other data sources/ databases to NOW (mod. Kari Lintulaakso)**

How to keep NOW data up to date when regional/specimen-level databases are updated. Curatorial process and curatorial dictatorship. Integration ≠ automation.

**G3: Treatment of composite localities: The Americas and more (mod. Oscar Wilson)**

This group will discuss the concept of locality in NOW. In particular, we will focus on the issue of general localities vs. individual localities and the concept of collecting area. This group will also discuss the general question of North and South American localities in NOW, most of which are composite localities.

**G4: How good are our data (mod. Lars van den Hoek Ostende)**

This group will discuss potential validation of historical data, treatment of data from published sources vs. personal communication. The group will discuss the treatment of data sources for entry to NOW as well as the use of uncertainty qualifiers. The group will also cover the processes of taxonomic treatment in NOW.

14:35-15:00 Reports from the group discussions

15:00-15:25 General discussion, suggestions, questions, collecting promises (mod. Lars van den Hoek Ostende)

15:25-15:30 Closing

### Zoom link for the meeting:

<https://helsinki.zoom.us/j/67798410715?pwd=a2c2a3BRRUR0dmNScXpqMzI3UVRiQT09MeetingID:67798410715;Passcode:160507>